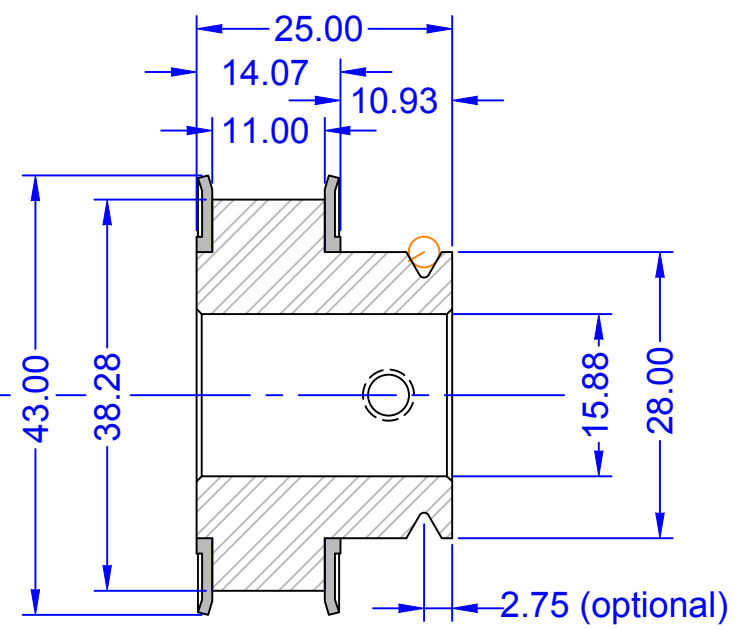
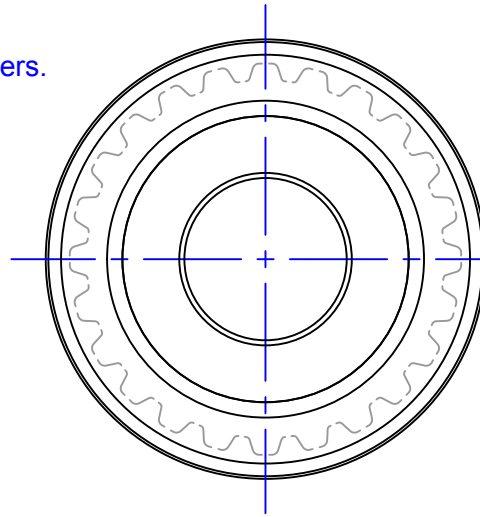


This document/file is placed in the **PUBLIC DOMAIN**. The author assumes no liability for the accuracy, fitness or application of the information or design herein.

Lewis Balentine, Houston, Texas, 2 February 2020

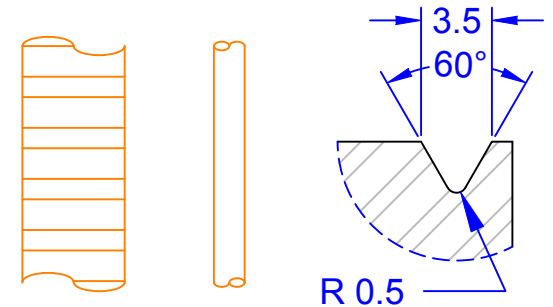
Unless otherwise noted all dimensions are in millimeters.

Center Line of Spindle Shaft



This is a modified set of XL 24 Tooth pulleys to be used with a Taig Micro Lathe and a CS1000 Brushless DC motor. If you start with a pair of 15mm bore pulleys then the only thing you need to do is size the bore of one for the 5/8 Taig spindle shaft.

The optional groove on the back end allows one to also use a standard Taig belt or a 3mm diameter polyurethane belt. In this case you may need to fill in the existing M5 set screw hole and move it closer to the XL10 portion of the pulley. You might also want to change to #10-32 screws to match the other bits on the Taig lathe.



Groove Detail
(optional)

Center Line of Motor Shaft

